

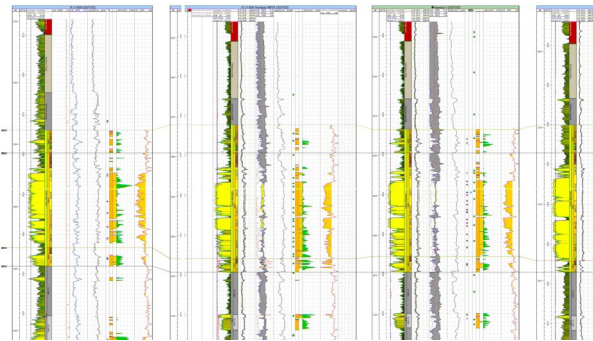
easyCOPY

Graphics Suite 9.0

Working with graphical data has never been easier; the EasyCopy Graphics Suite 9.0 is utilizing the newest ergonomic interface to make your work intuitive, fast and easy

EasyCopy is filling in the gap between primary professional applications and standard Windows applications. Version 9 offers a modern and ergonomic interface, where tools required in daily work processes are even easier to use.

Prepare & Share



Prepare – your presentations with easy content editing, image optimizations, annotations and much more.

Share – your analysis fast and efficient. Convert and send your project to colleagues and customers in any format.

Print – your work effortless on any printer or plotter

Present – your findings with EasyCopy and you can zoom right in to the details and work in your original files.

This makes EasyCopy users the most efficient people working with geological, geophysical and geographical data.

Get in control

With a one stop solution to handle all your graphic needs from bitmap to vector.

- View, manipulate and convert files: CGM+, CGM PIP, Clear Text and Multipage CGM, EMF, PDF, PDS, SVG,

PPT® as well as common desktop raster formats like JPEG, GIF and TIFF

Create montages of unlimited canvas size

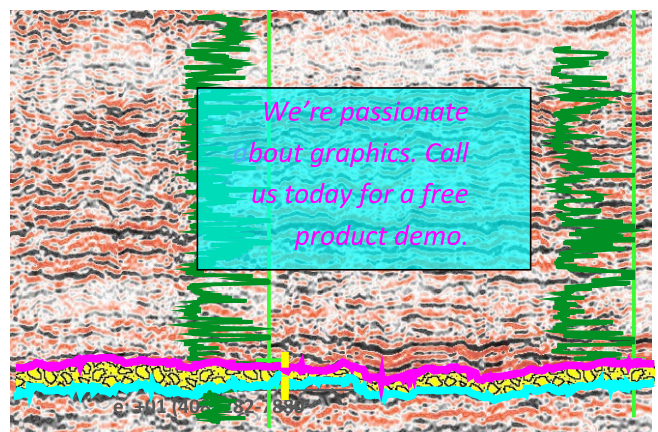
Your presentations consist of complex data – CGM files, raster images, annotations and more. EasyCopy's montage is the perfect way to turn this data into a convincing story. EasyCopy lets you combine vector and bitmap graphics in one display - no problem. And compatibility mode ensures the files will be viewed correctly when imported into other applications such as Microsoft PPT®. Save as PPT® directly from EasyCopy that ensures a painless process.

Print and plot from Windows, UNIX or Linux

Your printing needs are special. EasyCopy intelligently handles your industry specific needs with high quality CGM plotting, adapted page size, paneling and intelligent log plotting.

It is also good for your bottom line!

EasyCopy improves your workflow to make you more productive. Your team has access across the entire network and can output on all available printing resources.



easycopy 9.0

Graphics Suite



Montage:

- Create multi-page montages, presentations and PDF's
- Define, add and delete Layers
- Choose single Image mode or unlimited canvas size
- Add guidelines, lines, shapes, symbols, patterns, text..
- Benefit from the Snap capability and the Snap Info
- Undo, redo and use advanced context menus
- Edit colors and background incl. transparency
- Arrange your layout easily, rotate arbitrary, scale by %, align and distribute and group
- Use the advanced selection, crop and extract tools
- Screen capture directly to your canvas
- Save as layout, archive, image, or vector (PDF, CGM..)
- Save as PPT®

Edit and Optimize:

- Ungroup and edit CGM, EMF, SVG, PDF and PDSfiles
- Remove unwanted elements
- Convert seismic data and vector data separately for easy export to PowerPoint®

- Modify text or colors
- Add simple elements
- Save resulting file as CGM, PDF, EMF

Print/Plot:

- Plot directly from your UNIX or Windows desktop
- Trust the accurate WYSIWYG preview
- Advanced printer drivers for large format plotters
- Get support for special log printers
- Get automatic page sizes adapting your file 1:1
- Use paneling when you need larger print outs
- Integrate easy with other applications

General:

- EasyCopy has a flexible cross-platform licensing
- Command line options
- Tools to capture, record and enhance digital contents from computer monitors

Please download EasyCopy from www.gdesigns.co.uk

Technical data

EasyCopy Supports import and export of bitmap files:

- AVI
- BMP
- CALS Raster Type 1
- CGM Cell-array
- GIF 87a and 89a
- JPEG incl. Baseline, Extended Sequential mode Progressive mode and Lossless JPG
- JPEG 2000
- PCX
- PBM
- PDF
- PNG
- Silicon Graphics RGB
- HP Starbase
- Sun Raster
- Targa
- TIFF incl. Gr. 3 and 4, Bilevel, Gray, Palette, RGB
- XWD

EasyCopy Supports import and export of vector files:

- CGM, CGM+, Seismic extensions, CGM PIP, CGM ATA, CGM CALS, CGM Clear Text and Multi-Page CGM
- EMF, EMF+, SVG, .edit, .CPM
- PDF (import and export)
- PPT® (export)
- PDS® (Require s PDSVie w or GeoFram e)

EasyCopy supports all major platforms:

- AIX 5.3+
- HP-UX11+
- Linux (Intel or AMD x86 and x86-64)
- Sun Solaris 8+(SPARC)
- Sun Solaris 10+ (PC 64 bit)
- Windows XP, Vista, 7 and 8 (32 and 64 bit)

EasyCopy supports all printers and plotters:

- EasyCopy supports desktop printers, print systems, and large format plotters including log plotters.
- The EasyCopy Graphics Suite includes the following components: EasyCopy, EasyCGM and EasyVect

Valid from September 2013 – Subject to change without notice

For more information please visit www.gdesigns.co.uk or email steve@gdesigns.co.uk +44 2392 466750