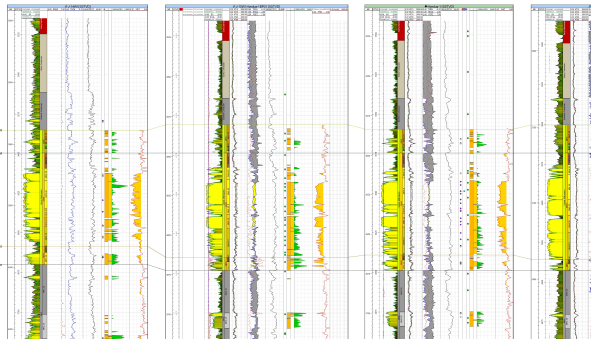




**Optimize the way you work with graphical data**

With easy content editing you are able to make compelling presentations, and share you analysis fast and efficient. EasyCopy helps Oil professionals working with their file formats, convert, print, annotate and much more. That makes EasyCopy users the most efficient people working with geological, geophysical and geographical files.



**Get in control using EasyCopy Montage**

EasyCopy is what you need to present your ideas easily – with intuitive and rich functionality – and efficiently – with a one stop solution to handle all your graphic needs from bitmap to vector.

- Create fantastic montages of unlimited canvas size
- View, manipulate and convert files: CGM+, CGM PIP, EMF, PDF, SVG, PPT® as well as common desktop raster formats like JPEG, GIF and TIFF
- Print or plot files and montages easily from your Windows, Unix or Linux desktop

**Create montages of unlimited canvas size**

Your presentations consist of complex data – CGM files, raster images, annotations and more. EasyCopy’s montage is the perfect way to turn this data into a convincing story. With unparalleled ease you can import graphics from multiple sources. You can even create 2D and 3D video clips.

**Montage:**

- Image mark-up mode or unlimited canvas size
- Add guidelines, lines, shapes, symbols, patterns, text..
- Snap to elements or use the measurement tool
- Undo, redo, tear off menus and context menus
- Edit colors and background incl. transparency
- Layout tools include position, arbitrary rotation, scale by %, align and distribution, group and ungroup
- Advanced selection, crop and extract tools
- Screen capture directly to your canvas
- Save as layout, archive, image, or vector (PDF, CGM...)
- Save as PPT®

**Edit and Optimize:**

- Remove unwanted elements
- Convert seismic data and vector data separately for easy export to PowerPoint®
- Modify text or colors
- Add simple elements
- Save resulting file as CGM, PDF, EMF

**View, manipulate and convert files easily**

CGM+, CGM PIP, EMF, SVG, JPEG, TIFF. You’ll be impressed when dealing with files from different sources. Vector files – with lines, shapes and colors – are constructed by mathematical formulas and demand a unique focus. Bitmap images rely on cells called pixels. EasyCopy lets you combine vector and bitmap graphics in one display - no problem. And compatibility mode ensures the files will be viewed correctly when imported into other applications such as Microsoft PPT®. Save as PPT® directly from EasyCopy that ensures a painless process.

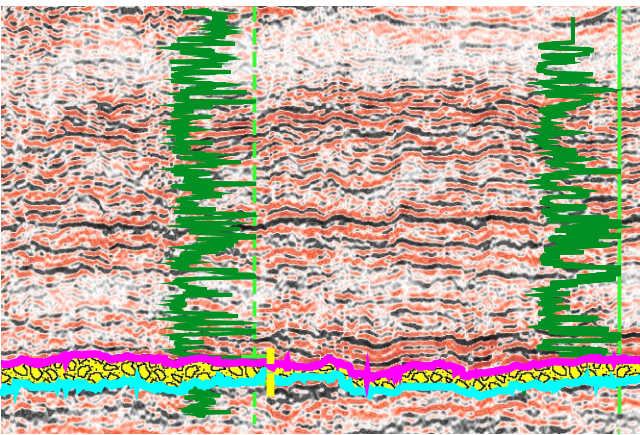
**Print and plot from Windows, Unix or Linux**

Your printing needs are special. EasyCopy intelligently handles your industry specific needs with high quality CGM plotting, adapted page size, paneling and intelligent log plotting.

**It is also good for your bottom line!**

EasyCopy improves your workflow to make you more productive. And, it optimizes your graphics investment with *one* easy cross-platform solution that handles both bitmap and vector formats. Your team has access across the entire network and can output on all available printing resources.

We’re passionate about graphics. Call us today for a free product demo.



**Print:**

- Plot directly from your UNIX or Windows desktop
- Accurate print preview
- Advanced printer drivers for large format plotters
- Support for special log printers
- Automatic adaption to page size
- Paneling and print layout tools
- Easy integration with other applications

**General:**

- Available in English, German and Chinese
- EasyCopy has a flexible cross-platform licensing system for single node license, fixed license or floating license
- Command line options for conversion, plot and montage
- Tools to capture, record and enhance digital contents from computer monitors

These are some of the EasyCopy Graphics Suite Features –

**Technical Data**

**EasyCopy Supports import and export of bitmap files:**

- AVI
- BMP
- CALS Raster Type 1
- CGM Cell-array
- GIF 87a and 89a
- JPEG incl. Baseline, Extended Sequential mode Progressive mode and Lossless JPG
- JPEG 2000
- PCX
- PBM
- PDF
- PNG
- Silicon Graphics RGB
- HP Starbase
- Sun Raster
- Targa
- TIFF incl. Bilevel, Gray, Palette, RGB
- XWD

**EasyCopy Supports import and export of vector files:**

- CGM, CGM+, Seismic extensions, CGM PIP, CGM ATA, CGM CALS
- EMF, SVG, .edit, .CPM
- PDF (export to vector)
- PPT® (export)

**EasyCopy supports all major platforms:**

- AIX 5.3+
- HP-UX11+
- Linux (Intel or AMD x86 and x86-64)
- Sun Solaris 8+(SPARC)
- Sun Solaris 10+ (PC 64 bit)
- Windows XP, Vista and 7 ( 32 and 64 bit)
- EasyCopy supports desktop printers, print systems, and large format plotters including log plotters.
- This montage solution uses the EasyCopy, EasyCGM and EasyVect products from our graphics suite.

Valid from June 2011 – Subject to change without notice